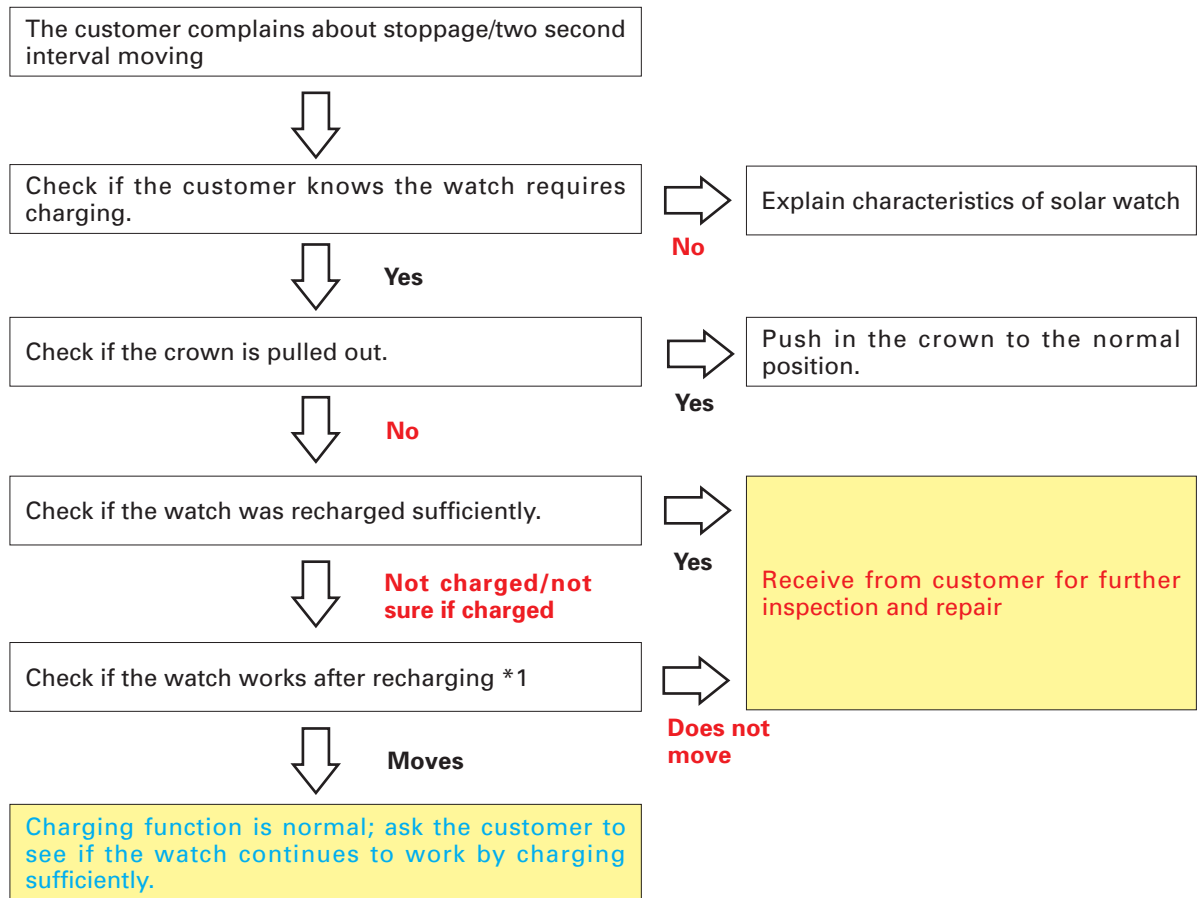


Service Bulletin

TROUBLE SHOOTING CHART FOR INSUFFICIENT CHARGING OF SOLAR WATCH

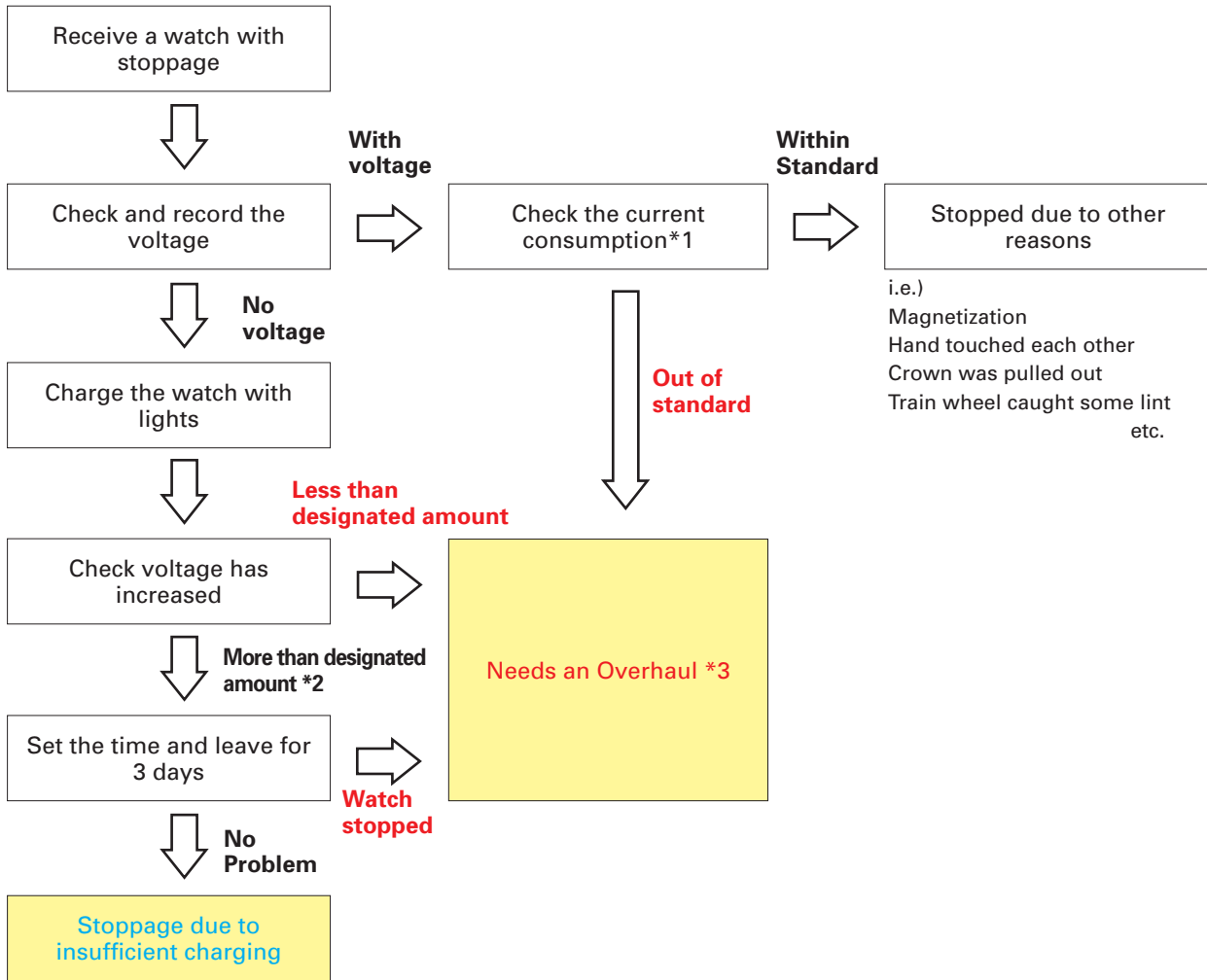
30% of inquiries about solar watches which Customer Service Dept in SEIKO WATCH CORPORATION received are about stoppage or 2-second interval moving due to insufficient charging. In the meantime, SEIKO Service Center (SSC) Japan reported that 60% of requested repairs for solar watches were because of insufficient charging; there were no problems. Since we have disclosed a quick diagnosis manual of solar watch for service reception and for telephone correspondence, we newly designed inspection flow chart for the workshop this time.

[Quick Diagnosis Manual for Service Reception and for Telephone Correspondence]: Tool & Manual



*1 Expose the watch to sunlight or strong artificial light by referring to "Guideline of charging time" to charge until the level of "B:Time required for steady operation".

[Inspection Flow Chart for the Workshop (NEW)]:



*1 To check the current consumption, be careful that the light does not hit to the solar cell.
 *2 See Technical Guide "Checking the recharging function".
 *3 Before servicing, check the output voltage of the solar cell - refer to the Technical Guide.

[Remarks for insufficient charged watches]:

If a watch was stopped due to insufficient charging, please instruct the following points to the customer when returning the watch. Otherwise, the customer may bring the watch with insufficient charging again in near future.

- Ladies' watches need to be charged more than men's watches because of the smaller solar cell and power reserve is shorter than men's watches.
- When charging the watch, do not place it too close to the light or leave it under the sunlight a long time as the watch temperature will become extremely high which may damage the parts inside the watch.
- When charging the watch, expose the whole solar cell to the light source vertically. If a part of the cell is hidden by sleeve, or if the angle is slanted, it may not be charged sufficiently.
- In case capacity of the rechargeable battery is exhausted, it requires a long time for a full charge. Periodic or constant charging is recommended.
- Though the watch does not need periodic battery replacement, periodic checking of mechanical parts as well as external parts is recommended.

[Leaflet for customer for charging of solar watch (NEW)]:


Further, to draw attention of customers how solar watches can be recharged and to avoid repair requests of insufficiently charged watches, SEIKO Watch Corporation started to attach a leaflet to the solar watches in Japan; we are also releasing a leaflet sample in English. We believe that the leaflet can be utilized in each country attached to solar watches, by translating to your own language at your end, if necessary.

Leaflet sample:

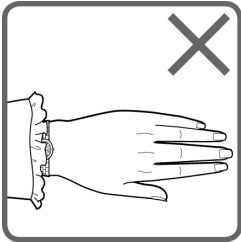
HOW TO USE A SEIKO SOLAR WATCH KEEPING THE POWER RESERVE

- A solar watch functions by receiving light energy by a solar cell (solar cell unit) and converts it into electrical energy to charge. To charge the solar watch, light has to hit the solar cell vertically so that it can be charged sufficiently.
- If a part of the cell is hidden by the sleeve, or if the angle is slanted, or if the watch is put in a drawer, it may not be charged sufficiently.

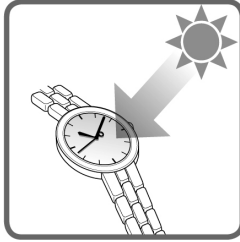
NOT OK



Watch is put in a drawer



Watch is hidden by a sleeve



Lights hits the solar cell vertically

- To keep enough power reserve for use:
 1. Charge under the sun or a fluorescent lamp in daily use, even for a short time.
 2. Put it under the sunlight for at least a half day once a month.*

* When charging the watch, do not leave it too close to a light or for too long a time, as the watch temperature will become extremely high, causing damage to the parts inside the watch.